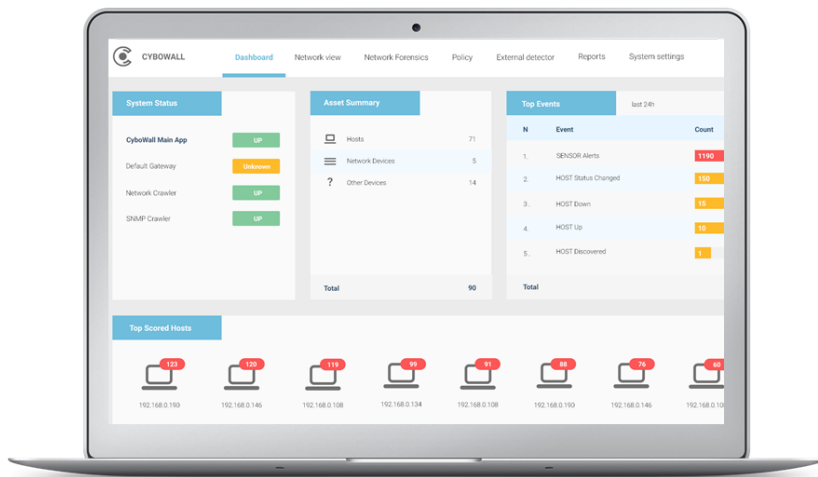


Cybowall™

NETWORK VISIBILITY, VULNERABILITY MANAGEMENT AND BREACH DETECTION



Cybowall central monitoring interface for total network visibility and reporting

SOLUTION OVERVIEW

Cybowall is a non-intrusive, agentless solution that provides complete and continuous monitoring of your network across all protocols and extending to all endpoints. Cybowall protects your network in real time; detecting and reacting to threats as they arise.

Reduce risks to your organization by gaining full visibility into your network. Cybowall enables organizations to:

- Quickly detect active breaches
- Identify and minimize potential vulnerabilities
- Manage and report on compliance (GDPR, PCI-DSS, ISO etc.)
- Record and analyze all events and incidents within the network for further investigation

Cybowall combines multiple cybersecurity tools and capabilities in one solution - securing networks of all sizes and providing unified defense against a continuously evolving threat landscape.

SOLUTION BENEFITS

- **Stop Endpoint Tampering and Malware:** Leverage network and endpoint detection of Advanced Persistent Threats
- **Map Network Assets:** Increase visibility with a map of all endpoints connected to your network to gain insight into your environment
- **Identify Vulnerabilities:** Stay informed of vulnerabilities for patch deployment prioritization
- **Detect Lateral Movement:** Trap attackers that have already breached perimeter defenses
- **Detect Active Breaches:** Discover network breaches quickly to reduce damaging effects
- **Meet Compliance Requirements:** Adhere to compliance standards; GDPR, ISO, PCI-DSS, HIPAA etc.

SOLUTION FEATURES



Network Visibility

- **Asset Mapping:** Dynamic asset map of all endpoints, including port profiles and activities
- **WMI:** Leverage WMI and continuous endpoint scanning for full network visibility
- **SIEM Capabilities:** Log management, event management, event correlation and reporting to help identify policy violations and enable response procedures



Vulnerability Management

- **Vulnerability Assessment:** Monitor business assets and identify vulnerable systems inside the network, including risk level, for patch deployment prioritization
- **Default/Weak Passwords:** Pinpoint and change default/weak passwords to reduce risks
- **Malware Hunter:** Identify malicious files and where they reside in the network



Breach Detection

- **Intrusion Detection:** Breach detection capabilities without network interference
- **Network Traps:** Insight into lateral movement between endpoints and detects threats by serving as a trip wire for active attacks
- **Network Forensics:** Discover and analyze the source of security attacks and incidents

TECHNICAL OVERVIEW

The Cybowall solution collects and analyzes information on both endpoint and network events. With a Sensor that sits out of line and takes a copy of all network and internal traffic via TAP/Port Mirroring, Cybowall functions as an IDS at the network level. Cybowall also utilizes an Agentless Scan that leverages, amongst other technologies, WMI capabilities to collect detailed forensic data and correlate it with known Indicators of Compromise (IOC). By centrally aggregating network-wide activity, Cybowall mines IOC data such as CVE, file hash, DNS, URL, hostnames, IP addresses, domains, URI and file paths. Deploying Network Trap decoy technology, and connected directly to the network's core switch via SNMP, Cybowall enables continuous network visibility and effective breach detection.

